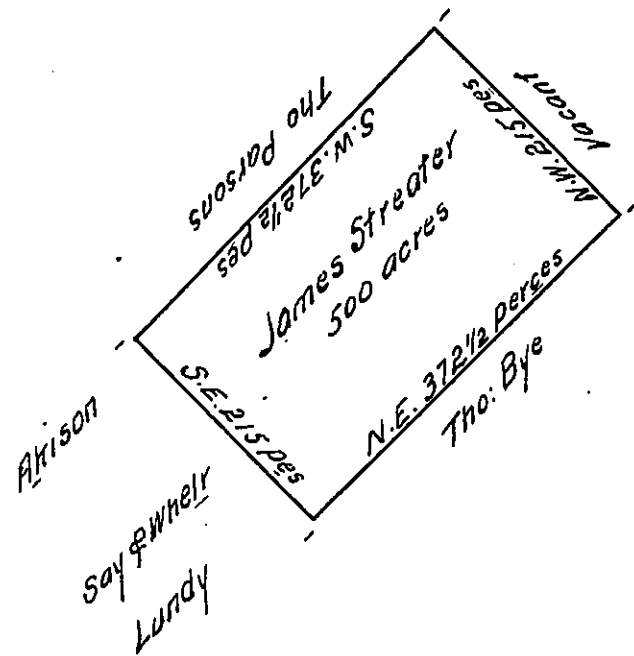


P. a scale of 40



According to a warrant to me directed by Edward Pennington Surveyor General bearing date the 6<sup>th</sup> day of the 2 month 1700. Surveyed unto James Streater in Right of George Sackman a Tract of Land Lying in the County of Bucks Beginning at an elme Tree in a swamp Thence part by Richard Lundy Say & Wheeler Lands & Margaret Athison North West 215 perches to a small white oake being the corner of Thomas Parsons Land Thence by the said Land north east Three hundred seventy two perches and a half to a post being another corner of said parsons Land Thence South east by vacant Land 215 perches to a post being a corner of Thomas Bye his Land Thence by the said Byes Land South West 372 1/2 perches to the first Station Containing five hundred acres of Land the 21 day of the 6<sup>th</sup> month 1700. P.

Phineas Pemberton

IN TESTIMONY that the above is a copy of the original remaining on file in the Department of Internal Affairs of Pennsylvania, made conformably to an Act of Assembly approved the 16th day of February, 1833, I have hereunto set my Hand and caused the Seal of said Department to be affixed at Harrisburg, this Twentieth day of April 1909

Henry Howick  
Secretary of Internal Affairs.